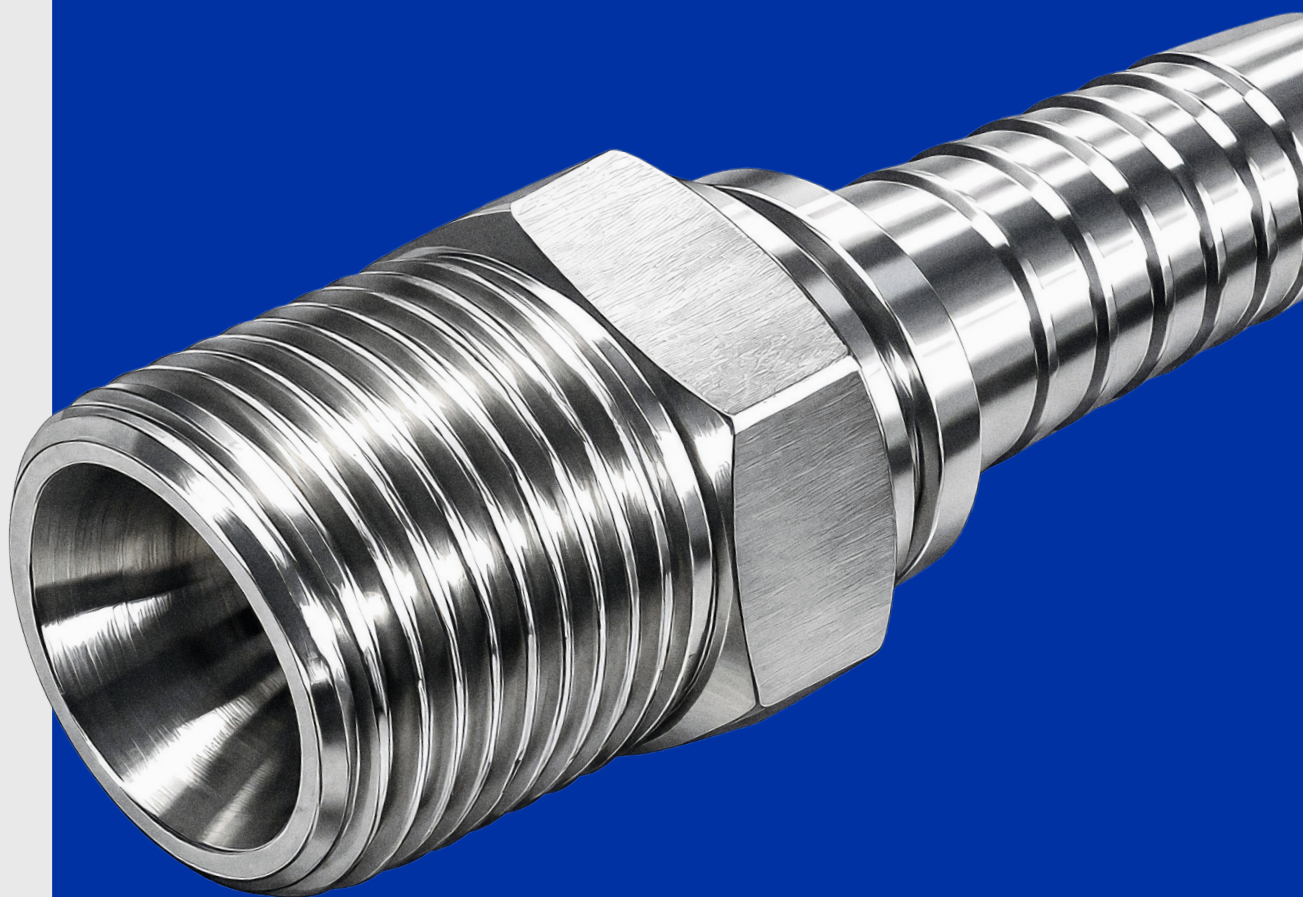


HY POWER



Terminales y Accesorios

Catálogo 2026

Índice

Terminales

CAMISA PARA PRENSAR TERMINALES SAE100 R1	05
CAMISA PARA PRENSAR TERMINALES SAE100 R2	05
CAMISA PARA PRENSAR TERMINALES SAE100 R9	05
CAMISA PARA PRENSAR TERMINALES SAE100 R13/R15	06
TERMINAL PARA PRENSAR MACHO FIJO CIERRE CONICO ROSCA NPT	06
TERMINAL PARA PRENSAR MACHO FIJO CIERRE CONICO ROSCA BSPT	07
TERMINAL PARA PRENSAR HEMBRA GIRATORIA ASIENTO MACHO ROSCA BSPP	07
TERMINAL PARA PRENSAR MACHO FIJO CIERRE JIC 37° ROSCA UNF	08
TERMINAL PARA PRENSAR HEMBRA GIRATORIA CIERRE JIC 37° ROSCA UNF	09
TERMINAL PARA PRENSAR HEMBRA GIRATORIA 90° CIERRE JIC 37° ROSCA UNF	10
TERMINAL PARA PRENSAR HEMBRA GIRATORIA 45° CIERRE JIC 37° ROSCA UNF	10
TERMINAL PARA PRENSAR MACHO FIJO CIERRE ORING ROSCA UNF	11
TERMINAL PARA PRENSAR HEMBRA GIRATORIA PARA HIDROLAVADORA	11
TERMINAL PARA PRENSAR UNION DOBLE	12
TERMINAL PARA PRENSAR PARA SOLDAR SALVAVIDAS	12
TERMINAL PARA PRENSAR UNION ORIENTABLE METRICA	13
TERMINAL PARA PRENSAR UNION ORIENTABLE BSPP	13
TERMINAL PARA PRENSAR MACHO FIJO CIERRE VIROLA ROSCA METRICA	14
TERMINAL PARA PRENSAR HEMBRA GIRATORIA CIERRE VIROLA ROSCA METRICA	14
TERMINAL PARA PRENSAR HEMBRA GIRATORIA 45° CIERRE VIROLA ROSCA METRICA	15
TERMINAL PARA PRENSAR HEMBRA GIRATORIA 90° CIERRE VIROLA ROSCA METRICA	15
TERMINAL PARA PRENSAR CON ANILLO FLANGED 3000 PSI	16
TERMINAL PARA PRENSAR CON ANILLO FLANGED 6000 PSI	16
TERMINAL PARA PRENSAR CON ANILLO FLANGED 45° 3000 PSI	17
TERMINAL PARA PRENSAR CON ANILLO FLANGED 45° 6000 PSI	17
TERMINAL PARA PRENSAR CON ANILLO FLANGED 90° 3000 PSI	18
TERMINAL PARA PRENSAR CON ANILLO FLANGED 90° 6000 PSI	18

Índice

JUEGO DE MEDIAS BRIDAS PARA ANILLO FLANGED 3000 PSI	19
JUEGO DE MEDIAS BRIDAS PARA ANILLO FLANGED 6000 PSI	19
TERMINAL PARA PRENSAR HEMBRA GIRATORIA CIERRE PLANO ROSCA UNF	20
TERMINAL PARA PRENSAR HEMBRA GIRATORIA CIERRE PLANO METRICO	20
TERMINAL PARA PRENSAR HEMBRA GIRATORIA CIERRE PLANO ROSCA BSPP	21
TERMINAL PARA PRENSAR HEMBRA GIRATORIA 90° CIERRE PLANO ROSCA UNF	21
TERMINAL PARA PRENSAR HEMBRA GIRATORIA 45° CIERRE PLANO ROSCA UNF	22
TERMINAL PARA PRENSAR MACHO FIJO CIERRE PLANO ROSCA UNF	22
TERMINAL PARA PRENSAR MACHO FIJO CIERRE PLANO METRICO	23
TERMINAL PARA PRENSAR HEMBRA GIRATORIA CIERRE PLANO ROSCA BSPP	23

Accesorios

CODO 90° MF CIERRE CONICO ROSCA NPT - MF CIERRE CONICO ROSCA NPT	24
CODO 90° HF CIERRE CONICO ROSCA NPT - MF CIERRE CONICO ROSCA NPT	24
CODO 90° HF CIERRE CONICO ROSCA NPT - HF CIERRE CONICO ROSCA NPT	25
CODO 45° HF CIERRE CONICO ROSCA NPT - MF CIERRE CONICO ROSCA NPT	25
TAPON MACHO FIJO CIERRE CONICO ROSCA NPT	26
TAPON HEMBRA FIJA CIERRE CONICO ROSCA NPT	26
TAPON MACHO FIJO CIERRE JIC 37° ROSCA UNF	26
CODO 90° MF CIERRE JIC 37° ROSCA UNF - HF CIERRE CONICO ROSCA NPT	27
CODO 90° MF CIERRE JIC 37° ROSCA UNF - MF CIERRE ORING ROSCA UNF	27
CODO 90° HG CIERRE JIC 37° ROSCA UNF - MF CIERRE JIC 37° ROSCA UNF	28
CODO 90° MF CIERRE PLANO ROSCA UNF - MF CIERRE CONICO ROSCA NPT	28
CODO 90° MF CIERRE PLANO ROSCA UNF - MF CIERRE ORING ROSCA UNF	29
ADAPTADOR MF CIERRE CONICO ROSCA NPT - MF CIERRE CONICO ROSCA NPT	29
ADAPTADOR HF CIERRE CONICO ROSCA NPT - HF CIERRE CONICO ROSCA NPT	30
ADAPTADOR HF CIERRE CONICO ROSCA NPT - MF CIERRE CONICO ROSCA NPT	30

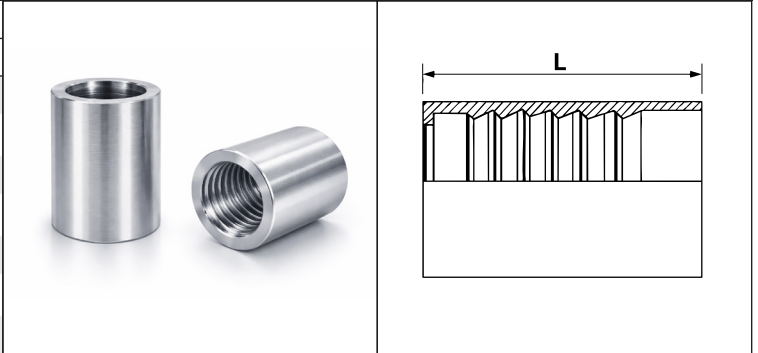
Índice

BUJE DE REDUCCION HF CIERRE CONICO ROSCA NPT - MF CIERRE CONICO ROSCA NPT	31
ADAPTADOR MF CIERRE CONICO ROSCA NPT - MF CIERRE ORING ROSCA UNF	31
ADAPTADOR HF CIERRE CONICO ROSCA NPT - MF CIERRE ORING ROSCA UNF	32
ADAPTADOR MF CIERRE PLANO ROSCA UNF - MF CIERRE CONICO ROSCA NPT	32
ADAPTADOR MF CIERRE PLANO ROSCA UNF - MF CIERRE ORING ROSCA UNF	33
ADAPTADOR MF CIERRE JIC 37° ROSCA UNF - MF CIERRE CONICO ROSCA NPT	33
ADAPTADOR MF CIERRE JIC 37° ROSCA UNF - MF CIERRE ORING ROSCA UNF	34
ADAPTADOR HG CIERRE JIC 37° ROSCA UNF - MF CIERRE JIC 37° ROSCA UNF	34
ADAPTADOR HG CIERRE JIC 37° ROSCA UNF - MF CIERRE CONICO ROSCA NPT	35
TEE MF CONICO ROSCA NPT EN TODOS SUS LADOS	35
TEE HF CONICO ROSCA NPT EN TODOS SUS LADOS	36
TEE MF CIERRE JIC 37° ROSCA UNF EN TODOS SUS LADOS	36
TEE MF CIERRE JIC 37° ROSCA UNF - MF CIERRE CONICO ROSCA NPT	37
TEE MF CIERRE JIC 37° ROSCA UNF - HG CIERRE JIC 37° ROSCA UNF	37
BULON PERFORADO MF CIERRE ARANDELA ROSCA METRICA	38

TERMINALES

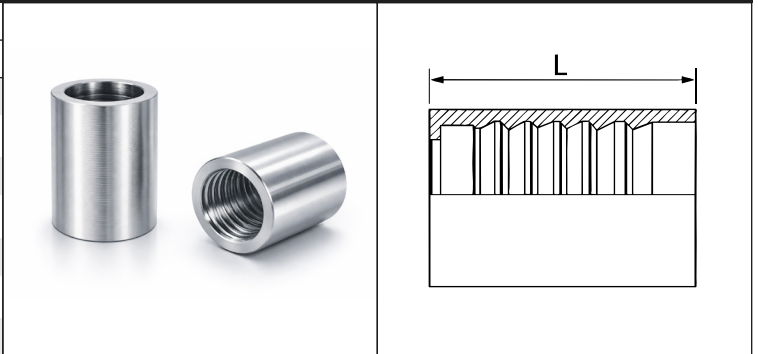
CAMISA PARA PRENSAR TERMINALES SAE100 R1

CÓDIGO	TAMAÑO DE LA MANGUERA		DIMENSIONES	
	PULGADAS	MM	D	L
HY60-3R1	3/16"	5	19	23
HY60-4R1	1/4"	6	20	30
HY60-5R1	5/16"	8	21	30
HY60-6R1	3/8"	10	23	32
HY60-8R1	1/2"	12	27	34
HY60-10R1	5/8"	16	31	37
HY60-12R1	3/4"	20	34	42
HY60-16R1	1"	25	43	51
HY60-20R1	1" 1/4	32	52	59
HY60-24R1	1" 1/2	40	58	74
HY60-32R1	2"	51	72	78



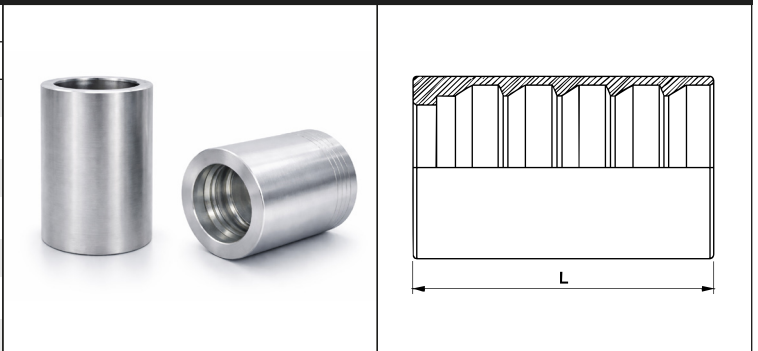
CAMISA PARA PRENSAR TERMINALES SAE100 R2

CÓDIGO	TAMAÑO DE LA MANGUERA		DIMENSIONES	
	PULGADAS	MM	D	L
HY60-3R2	3/16"	5	20	23
HY60-4R2	1/4"	6	23	30
HY60-5R2	5/16"	8	24	30
HY60-6R2	3/8"	10	26	32
HY60-8R2	1/2"	12	29	34
HY60-10R2	5/8"	16	33	37
HY60-12R2	3/4"	20	37	42
HY60-16R2	1"	25	46	51
HY60-20R2	1" 1/4	32	56	59
HY60-24R2	1" 1/2	40	58	74
HY60-32R2	2"	51	72	78A



CAMISA PARA PRENSAR TERMINALES SAE100 R9

CÓDIGO	TAMAÑO DE LA MANGUERA		DIMENSIONES	
	PULGADAS	MM	D	L
HY60-6R9	3/8"	10	26	39
HY60-8R9	1/2"	12	29	41
HY60-10R9	5/8"	16	33	43
HY60-12R9	3/4"	20	37	51
HY60-16R9	1"	25	47	62
HY60-20R9	1" 1/4	32	57	68
HY60-24R9	1" 1/2	40	65	75
HY60-32R9	2"	51	79	79
—	—	—	—	—



TERMINALES

CAMISA PARA PRENSAR TERMINALES SAE100 R13/R15

CÓDIGO	TAMAÑO DE LA MANGUERA		DIMENSIONES			
	PULGADAS	MM	D	L		
HY60-12R13/R15	3/4"	20	40	53		
HY60-16R13/R15	1"	25	50	66		
HY60-20R13/R15	1" 1/4	32	65	89		
HY60-24R13/R15	1" 1/2	40	73	102		
HY60-32R13/R15	2"	51	87	108		
—	—	—	—	—		
—	—	—	—	—		

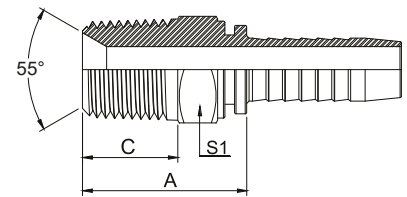
TERMINAL PARA PRENSAR MACHO FIJO CIERRE CONICO ROSCA NPT

CÓDIGO	ROSCA NPT (E)	TAMAÑO DE LA MANGUERA		DIMENSIONES (MM)			
		PULGADAS	MM	A	C	S1	
HY61-2-4	1/8" X 27	1/4"	6	22.5	10.5	12	
HY61-4-4	1/4" X 18	1/4"	6	27.5	15	17	
HY61-4-5	1/4" X 18	5/16"	8	27.5	15	17	
HY61-4-6	1/4" X 18	3/8"	10	27.5	15	17	
HY61-6-4	3/8" X 18	1/4"	6	29	16	19	
HY61-6-5	3/8" X 18	5/16"	8	29	16	19	
HY61-6-6	3/8" X 18	3/8"	10	29	16	19	
HY61-6-8	3/8" X 18	1/2"	12	29.5	16	19	
HY61-8-4	1/2" X 14	1/4"	6	33.5	19.5	22	
HY61-8-6	1/2" X 14	3/8"	10	33.5	19.5	22	
HY61-8-8	1/2" X 14	1/2"	12	34	19.5	22	
HY61-8-10	1/2" X 14	5/8"	16	35.5	19.5	22	
HY61-8-12	1/2" X 14	3/4"	20	37	19.5	27	
HY61-12-8	3/4" X 14	1/2"	12	37	19.5	27	
HY61-12-10	3/4" X 14	5/8"	16	37	19.5	27	
HY61-12-12	3/4" X 14	3/4"	20	38.5	19.5	27	
HY61-16-16	1" X 11,5	1"	25	47.5	25.5	36	
HY61-20-20	1" 1/4 X 11,5	1" 1/4	32	50.5	26.5	46	
HY61-24-24	1" 1/2 X 11,5	1" 1/2	40	53.5	27.5	50	
HY61-32-32	2" X 11,5	2"	51	56.5	27.5	65	
—	—	—	—	—	—	—	

TERMINALES

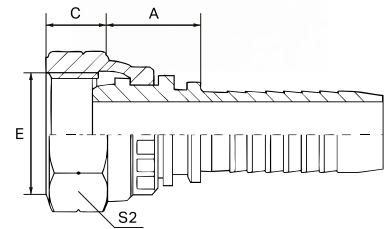
TERMINAL PARA PRENSAR MACHO FIJO CIERRE CONICO ROSCA BSPT

CÓDIGO	ROSCA BSPT (E)	TAMAÑO DE LA MANGUERA		DIMENSIONES (MM)		
		PULGADAS	MM	A	C	S1
HY61-B2-4	1/8" X 28	1/4"	6	22.5	10	12



TERMINAL PARA PRENSAR HEMBRA GIRATORIA ASIENTO MACHO ROSCA BSPP

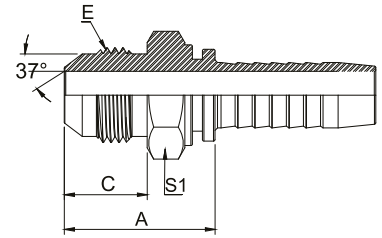
CÓDIGO	ROSCA BSPP (E)	TAMAÑO DE LA MANGUERA		DIMENSIONES (MM)		
		PULGADAS	MM	A	C	S2
HY63-B4-4	1/4" X 19	1/4"	6	19	2	14
HY63-B4-5	1/4" X 19	5/16"	8	20.5	4	19
HY63-B6-4	3/8" X 19	1/4"	6	21	5	22
HY63-B6-5	3/8" X 19	5/16"	8	20.5	4	19
HY63-B6-6	3/8" X 19	3/8"	10	20	5	22
HY63-B6-8	3/8" X 19	1/2"	12	22.5	5	22
HY63-B8-4	1/2" X 14	1/4"	6	21	6	27
HY63-B8-5	1/2" X 14	5/16"	8	22.5	6	27
HY63-B8-6	1/2" X 14	3/8"	10	22.5	6	27
HY63-B8-8	1/2" X 14	1/2"	12	22.5	6	27
HY63-B12-12	3/4" X 14	3/4"	20	26	9.5	32
HY63-B16-12	1" X 11	3/4"	20	26	9.5	32
HY63-B16-16	1" X 11	1"	25	28.5	11	41
HY63-B20-20	1" 1/4 X 11	1" 1/4	32	27.5	11	50
HY63-B24-24	1" 1/2 X 11	1" 1/2	40	37	11.5	55
HY63-B32-32	2" X 11	2"	51	34	15	70
—	—	—	—	—	—	—



TERMINALES

TERMINAL PARA PRENSAR MACHO FIJO CIERRE JIC 37° ROSCA UNF

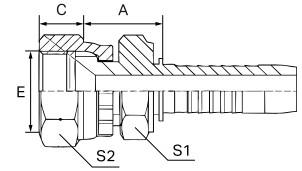
CÓDIGO	ROSCA UNF (E)	TAMAÑO DE LA MANGUERA		DIMENSIONES (MM)		
		PULGADAS	MM	A	C	S1
HY64-1-4	3/8" X 20	1/4"	6	26	14	12
HY64-2-4	7/16" X 20	1/4"	6	26	14	12
HY64-3-4	1/2" X 20	1/4"	6	26	14	14
HY64-4-4	9/16" X 18	1/4"	6	26.6	14.1	17
HY64-4-6	9/16" X 18	3/8"	10	26.6	14.1	17
HY64-6-4	3/4" X 16	1/4"	6	29	16.7	22
HY64-6-6	3/4" X 16	3/8"	10	30.7	16.7	22
HY64-6-8	3/4" X 16	1/2"	12	31.2	16.7	22
HY64-8-6	7/8" X 14	3/8"	10	34.3	19.3	24
HY64-8-8	7/8" X 14	1/2"	12	34	19.3	24
HY64-10-12	1" 1/16 X 12	3/4"	20	39.4	21.9	30
HY64-12-12	1" 3/16 X 12	3/4"	20	40.5	22.6	32
HY64-14-12	1" 5/16 X 12	3/4"	20	43.6	23.1	36
HY64-14-16	1" 5/16 X 12	1"	25	45.1	23.1	36
HY64-16-16	1" 5/8 X 12	1"	25	47	24.3	46
HY64-16-20	1" 5/8 X 12	1" 1/4	32	48.3	24.3	46
HY64-20-20	1" 7/8 X 12	1" 1/4	32	53	27.5	50
HY64-20-24	1" 7/8 X 12	1" 1/2	40	53.5	27.5	50
HY64-24-32	2" 1/2 X 12	2"	51	62.9	33.9	65



TERMINALES

TERMINAL PARA PRENSAR HEMBRA GIRATORIA CIERRE JIC 37° ROSCA UNF

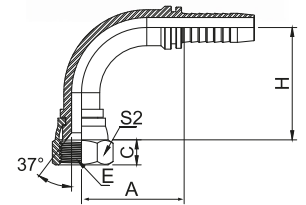
CÓDIGO	ROSCA UNF (E)	TAMAÑO DE LA MANGUERA		DIMENSIONES (MM)			
		PULGADAS	MM	A	C	S1	S2
HY65-1-4	3/8" X 20	1/4"	6	19	8.5	11	14
HY65-2-4	7/16" X 20	1/4"	6	20	9	12	15
HY65-3-4	1/2" X 20	1/4"	6	20.5	9.5	12	17
HY65-4-4	9/16" X 18	1/4"	6	21	11	14	19
HY65-4-6	9/16" X 18	3/8"	10	21	11	17	19
HY65-6-4	3/4" X 16	1/4"	6	22	11	18	22
HY65-6-6	3/4" X 16	3/8"	10	23	11	19	24
HY65-6-8	3/4" X 16	1/2"	12	24.5	11	22	24
HY65-8-6	7/8" X 14	3/8"	10	24.5	12	22	27
HY65-8-8	7/8" X 14	1/2"	12	24.5	13	22	27
HY65-8-10	7/8" X 14	5/8"	16	27	13	22	27
HY65-10-12	1" 1/16 X 12	3/4"	20	31.5	15	27	32
HY65-12-12	1" 3/16 X 12	3/4"	20	31.5	15	29	35
HY65-14-12	1" 5/16 X 12	3/4"	20	31.5	16	32	41
HY65-14-16	1" 5/16 X 12	1"	25	32.5	16	32	41
HY65-16-16	1" 5/8 X 12	1"	25	35	17	35	45
HY65-16-20	1" 5/8 X 12	1" 1/4	32	37	17	41	50
HY65-20-20	1" 7/8 X 12	1" 1/4	32	37	20	44	55
HY65-20-24	1" 7/8 X 12	1" 1/2	40	38	20	50	55
HY65-24-32	2" 1/2 X 12	2"	51	40	23.5	50	75
—	—	—	—	—	—	—	—



TERMINALES

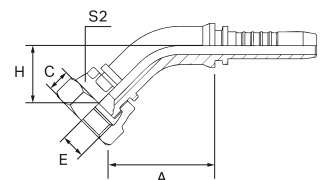
TERMINAL PARA PRENSAR HEMBRA GIRATORIA 90° CIERRE JIC 37° ROSCA UNF

CÓDIGO	ROSCA UNF (E)	TAMAÑO DE LA MANGUERA		DIMENSIONES (MM)			
		PULGADAS	MM	A	C	H	S2
HYNT65-4-4	9/16" X 18	1/4"	6	27.5	9	33	15
HYNT65-4-6	9/16" X 18	3/8"	10	33	10.5	40	19
HYNT65-6-4	3/4" X 16	1/4"	6	33	11	41.5	24
HYNT65-6-6	3/4" X 16	3/8"	10	42.5	11	48.5	24
HYNT65-6-8	3/4" X 16	1/2"	12	49	11	47.5	24
HYNT65-8-6	7/8" X 14	3/8"	10	42.5	13	49.5	27
HYNT65-8-8	7/8" X 14	1/2"	12	48.5	13	54	27
HYNT65-8-10	7/8" X 14	5/8"	16	50.5	13	62	27
HYNT65-10-10	1" 1/16 X 12	5/8"	16	48.5	15	55	32
HYNT65-10-12	1" 1/16 X 12	3/4"	20	60.5	15	63	32
HYNT65-12-12	1" 3/16 X 12	3/4"	20	65.5	15	63.5	36
HYNT65-14-16	1" 5/16 X 12	1"	25	66	16	75.5	41
HYNT65-16-16	1" 5/8 X 12	1"	25	66	16	75.5	41
HYNT65-16-20	1" 5/8 X 12	1" 1/4	32	91.5	17	80.5	50
HYNT65-20-20	1" 7/8 X 12	1" 1/4	32	91.5	20	80.5	55
HYNT65-20-24	1" 7/8 X 12	1" 1/2	40	109.4	20	94	55
HYNT65-24-32	2" 1/2 X 12	2"	51	133.1	23.5	121.8	75



TERMINAL PARA PRENSAR HEMBRA GIRATORIA 45° CIERRE JIC 37° ROSCA UNF

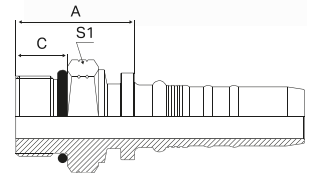
CÓDIGO	ROSCA UNF (E)	TAMAÑO DE LA MANGUERA		DIMENSIONES (MM)			
		PULGADAS	MM	A	C	H	S2
HYCT65-6-6	3/4" X 16	3/8"	10	45	11	21.5	24
HYCT65-8-8	7/8" X 14	1/2"	12	57.5	13	24.6	27
HYCT65-10-12	1" 1/16 X 12	3/4"	20	73.5	15	30	32
HYCT65-12-12	1" 3/16 X 12	3/4"	20	77.4	15	30	36
—	—	—	—	—	—	—	—



TERMINALES

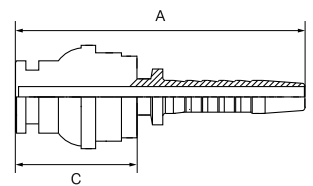
TERMINAL PARA PRENSAR MACHO FIJO CIERRE ORING ROSCA UNF

CÓDIGO	ROSCA UNF (E)	TAMAÑO DE LA MANGUERA		O-RING	DIMENSIONES (MM)		
		PULGADAS	MM		A	C	S1
HY68-4-4	9/16" X 18	1/4"	6	12	23	9.9	17
HY68-6-4	3/4" X 16	1/4"	6	113	24	11.1	22
HY68-6-6	3/4" X 16	3/8"	10	113	24	11.1	22
HY68-6-8	3/4" X 16	1/2"	12	113	24	11.1	22
HY68-8-6	7/8" X 14	3/8"	10	115	30	12.7	27
HY68-8-8	7/8" X 14	1/2"	12	115	30	12.7	27
HY68-10-8	1" 1/16 X 12	1/2"	12A	118	34	15.1	32



TERMINAL PARA PRENSAR HEMBRA GIRATORIA PARA HIDROLAVADORA

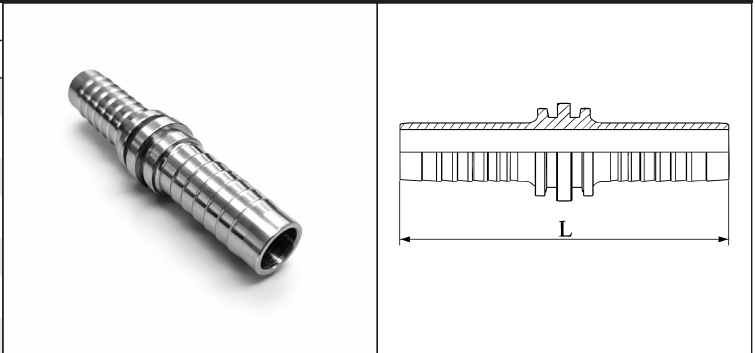
CÓDIGO	ROSCA (E)	TUBO (MM)	TAMAÑO DE LA MANGUERA		DIMENSIONES (MM)	
			PULGADAS	MM	A	C
HYHID-1-1	22 X 1,5	14	1/4"	6	56	23.5
HYHID-1-2	22 X 1,5	14	5/16"	8	58	23.5
HYHID-2-1	22 X 1,5	15	1/4"	6	56	23.5
HYHID-2-2	22 X 1,5	15	5/16"	8	58	23.5
—	—	—	—	—	—	—



TERMINALES

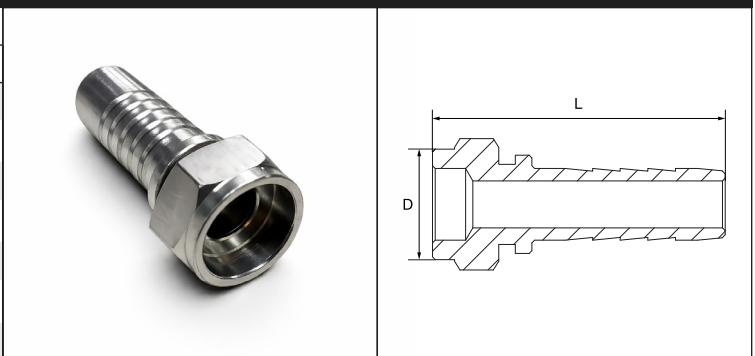
TERMINAL PARA PRENSAR UNION DOBLE

CÓDIGO	TAMAÑO DE LA MANGUERA		DIMENSIONES
	PULGADAS	MM	L
HY6D-3-3	3/16"	5	65
HY6D-4-4	1/4"	6	69
HY6D-5-5	5/16"	8	69
HY6D-6-6	3/8"	10	73
HY6D-8-8	1/2"	12	77
HY6D-10-10	5/8"	16	83
HY6D-12-12	3/4"	20	93
HY6D-16-16	1"	25	114
—	—	—	—



TERMINAL PARA PRENSAR PARA SOLDAR SALVAVIDAS

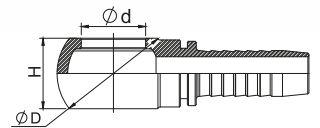
CÓDIGO	TAMAÑO DE LA MANGUERA		DIMENSIONES	
	PULGADAS	MM	L	D
HY6S-4-4	1/4"	6	43	14
HY6S-5-5	5/16"	8	45	14
HY6S-6-6	3/8"	10	46	19
HY6S-8-8	1/2"	12	54	20
HY6S-10-10	5/8"	16	56	24
HY6S-12-12	3/4"	20	61	26
HY6S-16-16	1"	25	68	34
HY6S-20-20	1" 1/4	32	80	40
HY6S-24-24	1" 1/2	40	91	49
HY6S-32-32	2"	51	101	58
—	—	—	—	—



TERMINALES

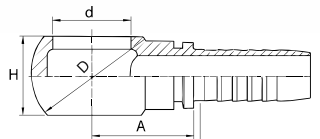
TERMINAL PARA PRENSAR UNION ORIENTABLE METRICA

CÓDIGO	TAMAÑO DE LA MANGUERA		TORNILLO	DIMENSIONES (MM)		
	PULGADAS	MM		d	D	H
HY60-M10-4	1/4"	6	M10X1	10.1	17	10
HY60-M12-4	1/4"	6	M12X1.5	12.1	20	12
HY60-M14-4	1/4"	6	M14X1.5	14.1	24	14
HY60-M14-6	3/8"	10	M14X1.5	14.1	24	14
HY60-M16-4	1/4"	6	M16X1.5	16.1	28	16
HY60-M16-6	3/8"	10	M16X1.5	16.1	28	16
HY60-M16-8	1/2"	12	M16X1.5	16.1	28	16
HY60-M18-6	3/8"	10	M18X1.5	18.1	32	20
HY60-M18-8	1/2"	12	M18X1.5	18.1	32	20
HY60-M20-6	3/8"	10	M20X1.5	20.1	35	22
HY60-M20-8	1/2"	12	M20X1.5	20.1	35	22
HY60-M22-6	3/8"	10	M22X1.5	22.1	39	25
HY60-M22-8	1/2"	12	M22X1.5	22.1	39	25



TERMINAL PARA PRENSAR UNION ORIENTABLE BSPP


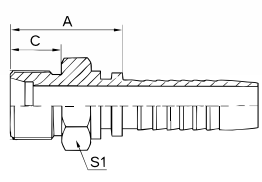
CÓDIGO	TAMAÑO DE LA MANGUERA		TORNILLO	DIMENSIONES (MM)		
	PULGADAS	MM		d	D	H
HY60-B8-8	1/2"	12	1/2" X 14	21	38	25



TERMINALES


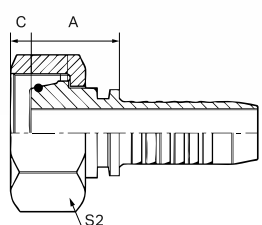
TERMINAL PARA PRENSAR MACHO FIJO CIERRE VIOLA ROSCA METRICA

CÓDIGO	ROSCA METRICA (E)	TAMAÑO DE LA MANGUERA		TUBO DIAMETRO EXTERIOR	DIMENSIONES (MM)		
		PULGADAS	MM		A	C	S1
HY62-M16-6	16 X 1,5	3/8"	10	8	24.5	12	17
HY62-M16-8	16 X 1,5	1/2"	12	8	24.5	12	17
HY62-M18-6	18 X 1,5	3/8"	10	10	25	12	19
HY62-M18-8	18 X 1,5	1/2"	12	10	25	12	19
HY62-M20-6	20 X 1,5	3/8"	10	12	26	12	22
HY62-M20-8	20 X 1,5	1/2"	12	12	26	12	22
HY62-M22-6	22 X 1,5	3/8"	10	14	28.5	14	24
HY62-M22-8	22 X 1,5	1/2"	12	14	29	14	24
HY62-M30X1.5-12	30 X 1,5	3/4"	20	20	35.5	16	32
HY62-M30X2-12	30 X 2,0	3/4"	20	20	35.5	16	32
HY62-M36X1.5-16	36 X 1,5	1"	25	25	40	18	38
HY62-M36X2-16	36 X 2,0	1"	25	25	40	18	38
HY62-M52X2-20	52 X 2,0	1" 1/4	32	38	48	22	55

TERMINAL PARA PRENSAR HEMBRA GIRATORIA CIERRE VIOLA ROSCA METRICA

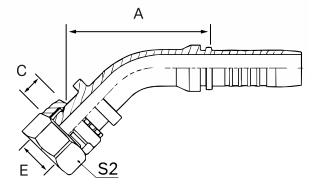
CÓDIGO	ROSCA METRICA (E)	TAMAÑO DE LA MANGUERA		TUBO DIAMETRO EXTERIOR	DIMENSIONES (MM)		
		PULGADAS	MM		A	C	S2
HY63-M14-4	14 X 1,5	1/4"	6	6	27.4	1.5	19
HY63-M14-5	14 X 1,5	5/16"	8	6	27.4	1.5	19
HY63-M16-6	16 X 1,5	3/8"	10	8	27.5	1.5	22
HY63-M16-8	16 X 1,5	1/2"	12	8	27.5	1.5	22
HY63-M18-6	18 X 1,5	3/8"	10	10	29.5	2	24
HY63-M18-8	18 X 1,5	1/2"	12	10	29.5	2	224
HY63-M20-6	20 X 1,5	3/8"	10	12	27.5	2.5	24
HY63-M20-8	20 X 1,5	1/2"	12	12	31.5	2.5	27
HY63-M22-6	22 X 1,5	3/8"	10	14	28.5	3	27
HY63-M22-8	22 X 1,5	1/2"	12	14	32.5	2.5	27
HY63-M30X1.5-12	30 X 1,5	3/4"	20	20	37	3	36
HY63-M30X2-12	30 X 2,0	3/4"	20	20	37	3	36
HY63-M36X1.5-16	36 X 1,5	1"	25	25	37	3.2	46
HY63-M36X2-16	36 X 2,0	1"	25	25	37	3.2	46
HY63-M45-20	45 X 1,5	1" 1/4	32	30	44	4.5	60
HY63-M52X2-20	52 X 2,0	1" 1/4	32	38	44	4.5	60
—	—	—	—	—	—	—	—

TERMINALES

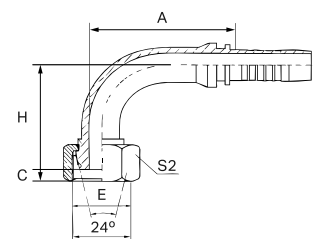
TERMINAL PARA PRENSAR HEMBRA GIRATORIA 45° CIERRE VIOLA ROSCA METRICA

CÓDIGO	ROSCA METRICA (E)	TAMAÑO DE LA MANGUERA		TUBO DIAMETRO EXTERIOR	DIMENSIONES (MM)		
		PULGADAS	MM		A	C	S2
HYCT63-M16-6	16 X 1,5	3/8"	10	8	54.2	1.5	22
HYCT63-M16-8	16 X 1,5	1/2"	12	8	55.6	1.5	22
HYCT63-M18-8	18 X 1,5	1/2"	12	10	57.2	2	22
HYCT63-M20-6	20 X 1,5	3/8"	10	12	49.7	2.5	24
HYCT63-M20-8	20 X 1,5	1/2"	12	12	67.8	2.5	27



TERMINAL PARA PRENSAR HEMBRA GIRATORIA 90° CIERRE VIOLA ROSCA METRICA

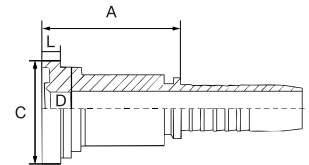
CÓDIGO	ROSCA METRICA (E)	TAMAÑO DE LA MANGUERA		TUBO DIAMETRO EXTERIOR	DIMENSIONES (MM)		
		PULGADAS	MM		A	C	S2
HYNT63-M16-6	16 X 1,5	3/8"	10	8	33	2	24
HYNT63-M16-8	16 X 1,5	1/2"	12	8	35.6	2.5	27
HYNT63-M18-8	18 X 1,5	1/2"	12	10	39.5	2.5	27
HYNT63-M20-6	20 X 1,5	3/8"	10	12	35.8	2.5	24
HYNT63-M20-8	20 X 1,5	1/2"	12	12	41	2.5	27
HYNT63-M22-6	22 X 1,5	3/8"	10	14	35.3	2.5	27
HYNT63-M22-8	22 X 1,5	1/2"	12	14	41	2.5	27
HYNT63-M45-20	45 X 1,5	1" 1/4	32	30	71.2	5	50
—	—	—	—	—	—	—	—



TERMINALES

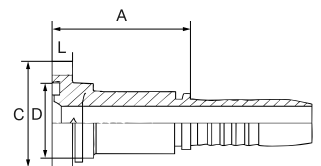
TERMINAL PARA PRENSAR CON ANILLO FLANGED 3000 PSI

CÓDIGO	ANILLO (MM)	TAMAÑO DE LA MANGUERA		DIMENSIONES (MM)			
		PULGADAS	MM	A	C	D	L
HYF338-12R9	38.1	3/4"	20	48	38.1	31.7	6.73
HYF338-16R9	38.1	1"	25	49	38.1	31.7	6.73
HYF344-12R9	44.4	3/4"	20	51	44.4	38	8
HYF344-16R9	44.4	1"	25	52	44.4	38	8
HYF350-16R9	50.8	1"	25	57	50.8	43	8



TERMINAL PARA PRENSAR CON ANILLO FLANGED 6000 PSI

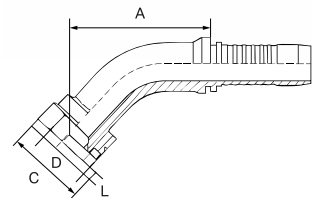
CÓDIGO	ANILLO (MM)	TAMAÑO DE LA MANGUERA		DIMENSIONES (MM)			
		PULGADAS	MM	A	C	D	L
HYF638-10R9	31.7	5/8"	16	51	41.3	32	8.76
HYF638-12R9	44.4	3/4"	20	51	41.3	32	8.76
—	—	—	—	—	—	—	—



TERMINALES

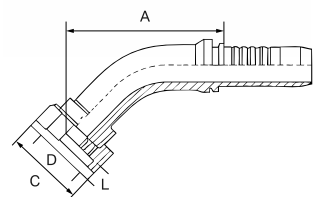
TERMINAL PARA PRENSAR CON ANILLO FLANGED 45° 3000 PSI

CÓDIGO	ANILLO (MM)	TAMAÑO DE LA MANGUERA		DIMENSIONES (MM)			
		PULGADAS	MM	A	C	D	L
HYCTF338-12R9	38.1	3/4"	20	77	38.1	31.7	6.73
HYCTF338-16R9	38.1	1"	25	85.2	44.4	38	8
HYCTF344-12R9	44.4	3/4"	20	77	44.4	38	8
HYCTF344-16R9	44.4	1"	25	85.2	44.4	38	8
HYCTF350-16R9	50.8	1"	25	94.5	50.8	43	8
HYCTF350-20R9	50.8	1" 1/41"	32	94.5	50.8	43	8
—	—	—	—	—	—	—	—



TERMINAL PARA PRENSAR CON ANILLO FLANGED 45° 6000 PSI

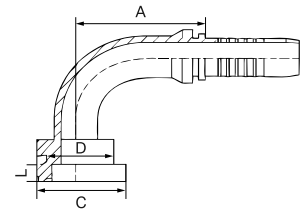
CÓDIGO	ANILLO (MM)	TAMAÑO DE LA MANGUERA		DIMENSIONES (MM)			
		PULGADAS	MM	A	C	D	L
HYCTF644-12R9	44.4	3/4"	20	45.4	47.6	38	9.53



TERMINALES

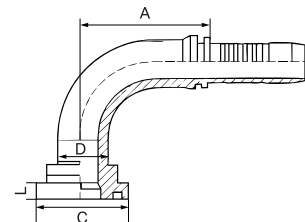
TERMINAL PARA PRENSAR CON ANILLO FLANGED 90° 3000 PSI

CÓDIGO	ANILLO (MM)	TAMAÑO DE LA MANGUERA		DIMENSIONES (MM)			
		PULGADAS	MM	A	C	D	L
HYNTF338-12R9	38.1	3/4"	20	66.2	38.1	31.7	6.73
HYNTF338-16R9	38.1	1"	25	76.7	38.1	31.7	6.73
HYNTF344-12R9	44.4	3/4"	20	66.2	44.4	38	8
HYNTF344-16R9	44.4	1"	25	78	44.4	38	8
HYNTF350-16R9	50.8	1"	25	78	50.8	43	8



TERMINAL PARA PRENSAR CON ANILLO FLANGED 90° 6000 PSI

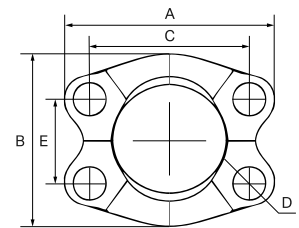
CÓDIGO	ANILLO (MM)	TAMAÑO DE LA MANGUERA		DIMENSIONES (MM)			
		PULGADAS	MM	A	C	D	L
HYNTF644-16R9	44.4	1"	25	78	47.6	38	9.53
HYNTF644-20R9	44.4	1" 1/4	32	91.5	47.6	38	9.53
HYNTF650-16R9	50.8	1"	25	78	54	44	10.29
HYNTF650-20R9	50.8	1" 1/4	32	91.5	54	44	10.29
—	—	—	—	—	—	—	—



TERMINALES

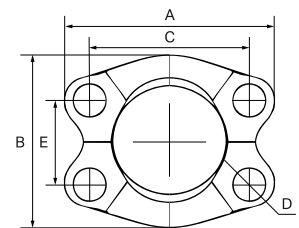
JUEGO DE MEDIAS BRIDAS PARA ANILLO FLANGED 3000 PSI

CÓDIGO	ANILLO (MM)	DIMENSIONES (MM)					TORNILLO	PRESIÓN (PSI)
		A	B	C	D	E		
HYMB3-38	38.1	65	52.4	47.6	11	22.2	M10 X 30	5000
HYMB3-44	44.4	70	57.8	52.4	11	26.2	M10 X 30	5000
HYMB3-50	50.8	79	73	58.7	11	30.2	M10 X 30	4000



JUEGO DE MEDIAS BRIDAS PARA ANILLO FLANGED 6000 PSI

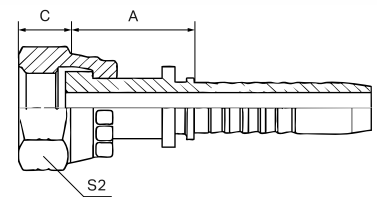
CÓDIGO	ANILLO (MM)	DIMENSIONES (MM)					TORNILLO	PRESIÓN (PSI)
		A	B	C	D	E		
HYMB6-38	38.1	71	61.8	50.8	11	23.8	M10 X 30	6000
HYMB6-44	44.4	81	71.4	57.2	13	27.8	M12 X 45	6000
HYMB6-50	50.8	95	79.2	66.7	15	31.8	M14 X 50	6000



TERMINALES

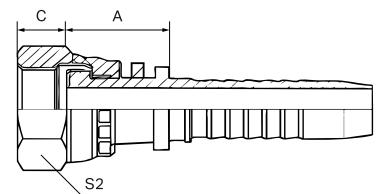
TERMINAL PARA PRENSAR HEMBRA GIRATORIA CIERRE PLANO ROSCA UNF

CÓDIGO	ROSCA UNF (E)	TAMAÑO DE LA MANGUERA		DIMENSIONES (MM)		
		PULGADAS	MM	A	C	S2
HYP60-4-4	9/16" X 18	1/4"	6	25.5	8.5	19
HYP60-5-4	11/16" X 16	1/4"	6	23.5	10	22
HYP60-5-6	11/16" X 16	3/8"	10	26.5	10	22
HYP60-5-8	11/16" X 16	1/2"	12	26	10	22
HYP60-7-6	13/16" X 16	3/8"	10	24.5	11	27
HYP60-7-8	13/16" X 16	1/2"	12	28	11	27
HYP60-7-10	13/16" X 16	5/8"	16	29	11	27
HYP60-9-8	1" X 14	1/2"	12	29	13.5	30
HYP60-9-10	1" X 14	5/8"	16	34	13.5	30
HYP60-9-12	1" X 14	3/4"	20	34	13.5	30
HYP60-12-12	1" 3/16 X 12	3/4"	20	36.5	15	36
HYP60-12-16	1" 3/16 X 12	1"	25	36	15	36
HYP60-15-12	1" 7/16 X 12	3/4"	20	32.5	14.8	41
HYP60-15-16	1" 7/16 X 12	1"	25	34.3	14.8	41
HYP60-19-16	1" 11/16 X 12	1"	25	34.5	15	50
HYP60-19-20	1" 11/16 X 12	1" 1/4	32	42.5	15	50
—	—	—	—	—	—	—



TERMINAL PARA PRENSAR HEMBRA GIRATORIA CIERRE PLANO METRICO

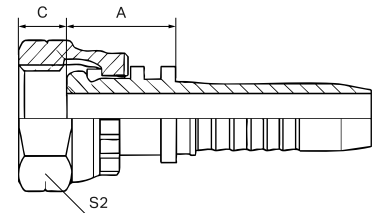
CÓDIGO	ROSCA METRICA (E)	TAMAÑO DE LA MANGUERA		DIMENSIONES (MM)		
		PULGADAS	MM	A	C	S2
HYP60-M18-6	18 X 1,5	3/8"	10	17.5	8	24
HYP60-M20-6	20 X 1,5	3/8"	10	18	10	24
HYP60-M20-8	20 X 1,5	1/2"	12	18.5	10	27
HYP60-M22-8	22 X 1,5	1/2"	12	18.5	10	27
—	—	—	—	—	—	—



TERMINALES

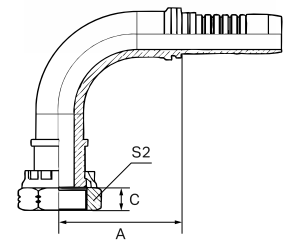
TERMINAL PARA PRENSAR HEMBRA GIRATORIA CIERRE PLANO ROSCA BSPP

CÓDIGO	ROSCA BSPP (E)	TAMAÑO DE LA MANGUERA		DIMENSIONES (MM)		
		PULGADAS	MM	A	C	S2
HYP60-B8-6	1/2" X 14	3/8"	10	18	10.5	27
HYP60-B8-8	1/2" X 14	1/2"	12	18.5	10.5	27
HYP60-B12-12	3/4" X 14	3/4"	20	21.5	13.5	32



TERMINAL PARA PRENSAR HEMBRA GIRATORIA 90° CIERRE PLANO ROSCA UNF

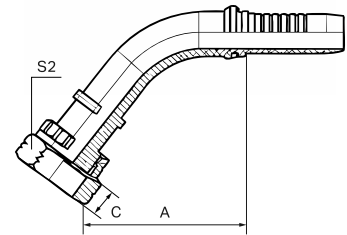
CÓDIGO	ROSCA UNF (E)	TAMAÑO DE LA MANGUERA		DIMENSIONES (MM)		
		PULGADAS	MM	A	C	S2
HYNTP60-4-4	9/16" X 18	1/4"	6	30	41	19
HYNTP60-4-6	9/16" X 18	3/8"	10	33	44	19
HYNTP60-5-4	11/16" X 16	1/4"	6	33	37.5	22
HYNTP60-5-6	11/16" X 16	3/8"	10	35.3	49.3	22
HYNTP60-5-8	11/16" X 16	1/2"	12	41	55	22
HYNTP60-7-6	13/16" X 16	3/8"	10	35.3	39.8	27
HYNTP60-7-8	13/16" X 16	1/2"	12	41	57.5	27
HYNTP60-7-10	13/16" X 16	5/8"	16	56.5	61.5	27
HYNTP60-9-8	1" X 14	1/2"	12	41	46	30
HYNTP60-9-10	1" X 14	5/8"	16	56	66	30
HYNTP60-9-12	1" X 14	3/4"	20	65.5	75.5	30
HYNTP60-12-10	1" 3/16 X 12	5/8"	16	56	51.5	36
HYNTP60-12-12	1" 3/16 X 12	3/4"	20	65.5	77	36
HYNTP60-12-16	1" 3/16 X 12	1"	25	76.5	83.5	36
HYNTP60-15-12	1" 7/16 X 12	3/4"	20	65.5	63	41
HYNTP60-15-16	1" 7/16 X 12	1"	25	76.9	67.5	41
HYNTP60-19-16	1" 11/16 X 12	1"	25	76.7	67.5	50
HYNTP60-19-20	1" 11/16 X 12	1" 1/4"	32	93	100	50
—	—	—	—	—	—	—



TERMINALES

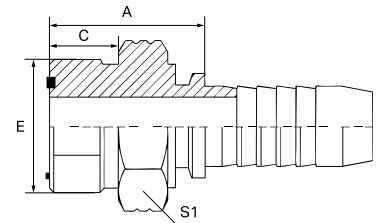
TERMINAL PARA PRENSAR HEMBRA GIRATORIA 45° CIERRE PLANO ROSCA UNF

CÓDIGO	ROSCA UNF (E)	TAMAÑO DE LA MANGUERA		DIMENSIONES (MM)		
		PULGADAS	MM	A	C	S2
HYCTP60-4-4	9/16" X 18	1/4"	6	45.5	23.4	19
HYCTP60-4-6	9/16" X 18	3/8"	10	49.2	24.9	19
HYCTP60-5-4	11/16" X 16	1/4"	6	39.5	17.4	22
HYCTP60-5-6	11/16" X 16	3/8"	10	51.7	27.4	22
HYCTP60-5-8	11/16" X 16	1/2"	12	63.9	29	22
HYCTP60-7-6	13/16" X 16	3/8"	10	44.6	20.3	27
HYCTP60-7-8	13/16" X 16	1/2"	12	65.3	30.4	27
HYCTP60-7-10	13/16" X 16	5/8"	16	76.5	31.7	27
HYCTP60-9-8	1" X 14	1/2"	12	58.2	23.3	30
HYCTP60-9-10	1" X 14	5/8"	16	79.7	34.9	30
HYCTP60-9-12	1" X 14	3/4"	20	86.5	38.4	30
HYCTP60-12-16	1" 3/16 X 12	1"	25	95.3	41	36
HYCTP60-15-12	1" 7/16 X 12	3/4"	20	74	29.6	41
HYCTP60-15-16	1" 7/16 X 12	1"	25	84.1	29.7	41
HYCTP60-19-16	1" 11/16 X 12	1"	25	80.9	32.7	50
HYCTP60-19-20	1" 11/16 X 12	1" 1/4	32	111.2	49	50
—	—	—	—	—	—	—



TERMINAL PARA PRENSAR MACHO FIJO CIERRE PLANO ROSCA UNF

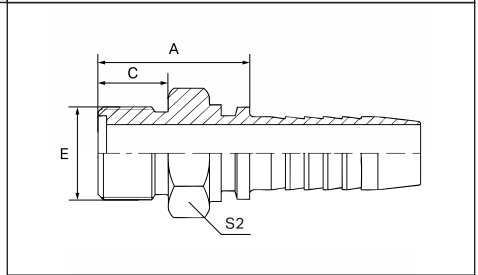
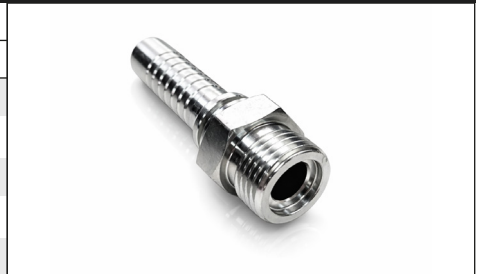
CÓDIGO	ROSCA UNF (E)	TAMAÑO DE LA MANGUERA		DIMENSIONES (MM)		
		PULGADAS	MM	A	C	S1
HYP68-4-4	9/16" X 18	1/4"	6	22.3	9.8	17
HYP68-5-4	11/16" X 16	1/4"	6	24.2	11.2	19
HYP68-5-6	11/16" X 16	3/8"	10	24.2	11.2	19
HYP68-7-6	13/16" X 16	3/8"	10	26.8	12.8	22
HYP68-7-8	13/16" X 16	1/2"	12	27.3	12.8	22
HYP68-9-8	1" X 14	1/2"	12	31.5	15.5	27
HYP68-9-10	1" X 14	5/8"	16	33	15.5	27
HYP68-9-12	1" X 14	3/4"	20	36	17	32
HYP68-12-12	1" 3/16 X 12	3/4"	20	36.5	17	32
HYP68-12-16	1" 3/16 X 12	1"	25	39.5	17.5	38
HYP68-15-12	1" 7/16 X 12	3/4"	20	37	17.5	38
HYP68-15-16	1" 7/16 X 12	1"	25	39.5	17.5	38
HYP68-19-16	1" 11/16 X 12	1"	25	41.5	17.5	46
HYP68-19-20	1" 11/16 X 12	1" 1/4	32	44.5	17.5	55
—	—	—	—	—	—	—



TERMINALES

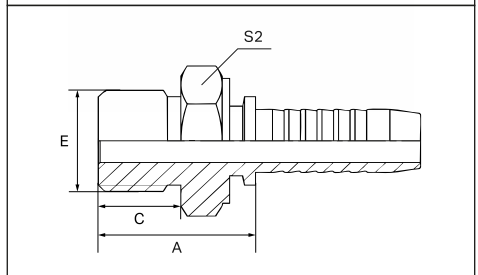
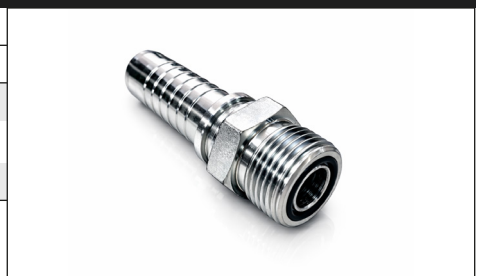
TERMINAL PARA PRENSAR MACHO FIJO CIERRE PLANO METRICO

CÓDIGO	ROSCA METRICA (E)	TAMAÑO DE LA MANGUERA		DIMENSIONES (MM)		
		PULGADAS	MM	A	C	S2
HYP68-M18-6	18 X 1,5	3/8"	10	23.5	11	19
HYP68-M20-6	20 X 1,5	3/8"	10	25	11.5	21
HYP68-M20-8	20 X 1,5	1/2"	12	25	11.5	21
HYP68-M22-8	22 X 1,5	1/2"	12	26.5	12	22
—	—	—	—	—	—	—



TERMINAL PARA PRENSAR MACHO FIJO CIERRE PLANO ROSCA BSPP

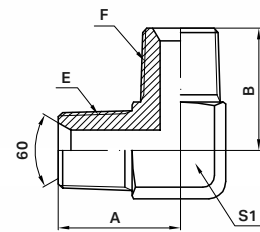
CÓDIGO	ROSCA BSPP (E)	TAMAÑO DE LA MANGUERA		DIMENSIONES (MM)		
		PULGADAS	MM	A	C	S2
HYP68-B8-6	1/2" X 14	3/8"	10	33.5	14	27
HYP68-B8-8	1/2" X 14	1/2"	12	34	14	27
HYP68-B12-12	3/4" X 14	3/4"	20	38	15.5	32



ACCESORIOS

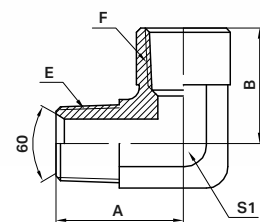
CODO 90° MF CIERRE CONICO ROSCA NPT - MF CIERRE CONICO ROSCA NPT

CÓDIGO	ROSCAS		DIMENSIONES (MM)		
	NPT (E)	NPT (F)	A	B	S1
HY211-4-4	1/4" X 18	1/4" X 18	29	27	14
HY211-6-6	3/8" X 18	3/8" X 18	30	29	17
HY211-8-8	1/2" X 14	1/2" X 14	37	37	22
HY211-12-12	3/4" X 14	3/4" X 14	40	40	27
—	—	—	—	—	—



CODO 90° HF CIERRE CONICO ROSCA NPT - MF CIERRE CONICO ROSCA NPT

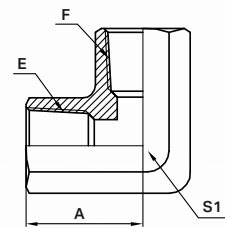
CÓDIGO	ROSCAS		DIMENSIONES (MM)		
	NPT (E)	NPT (F)	A	B	S1
HY211-4I-4	1/4" X 18	1/4" X 18	27	21	17
HY211-6I-6	3/8" X 18	3/8" X 18	32	27	22
HY211-8I-8	1/2" X 14	1/2" X 14	35	30	27
HY211-12I-12	3/4" X 14	3/4" X 14	40	32	33
—	—	—	—	—	—



ACCESORIOS

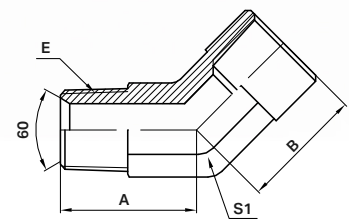
CODO 90° HF CIERRE CONICO ROSCA NPT - HF CIERRE CONICO ROSCA NPT

CÓDIGO	ROSCAS		DIMENSIONES (MM)		
	NPT (E)	NPT (F)	A	—	S1
HY211-8I-8I	1/2" X 14	1/2" X 14	27	—	26
HY211-12I-12I	3/4" X 14	3/4" X 14	33	—	34
—	—	—	—	—	—



CODO 45° HF CIERRE CONICO ROSCA NPT - MF CIERRE CONICO ROSCA NPT

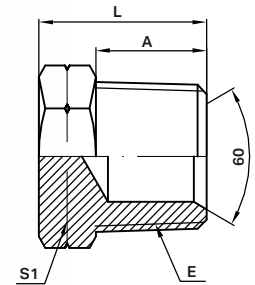
CÓDIGO	ROSCAS		DIMENSIONES (MM)		
	NPT (E)	NPT (F)	A	B	S1
HY911-8I-8	1/2" X 14	1/2" X 14	33	28	27



ACCESORIOS

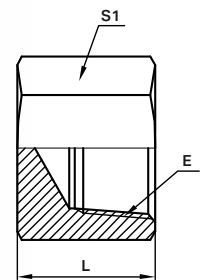
TAPON MACHO FIJO CIERRE CONICO ROSCA NPT

CÓDIGO	ROSCA NPT (E)	DIMENSIONES		
		A	L	S1
HY91-4	1/4" X 18	14	20	17
HY91-6	3/8" X 18	14	21	19
HY91-8	1/2" X 14	19	27	22
HY91-12	3/4" X 14	19.5	29	30
HY91-16	1" X 11.5	24	36	36
HY91-20	1" 1/4 X 11.5	25	38	46
—	—	—	—	—



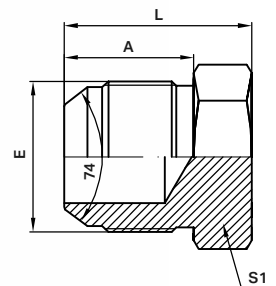
TAPON HEMBRA FIJA CIERRE CONICO ROSCA NPT

CÓDIGO	ROSCA NPT (E)	DIMENSIONES		
		A	—	S1
HY91-4I	1/4" X 18	23	—	19
HY91-6I	3/8" X 18	24	—	24
HY91-8I	1/2" X 14	28	—	30



TAPON MACHO FIJO CIERRE JIC 37° ROSCA UNF

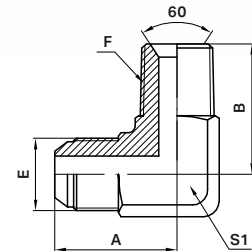
CÓDIGO	ROSCA UNF (E)	DIMENSIONES		
		A	L	S1
HY94-6	3/4" X 16	16.7	25	22
HY94-8	7/8" X 14	19.5	28	24
—	—	—	—	—



ACCESORIOS

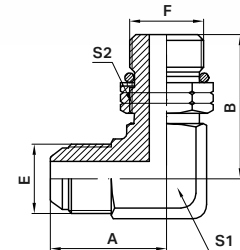
CODO 90° MF CIERRE JIC 37° ROSCA UNF - HF CIERRE CONICO ROSCA NPT

CÓDIGO	ROSCAS		DIMENSIONES (MM)		
	UNF (E)	NPT (F)	A	B	S1
HY241-4-4	9/16" X 18	1/4" X 18	29	27	14
HY241-4-6	9/16" X 18	3/8" X 18	22	22	17
HY241-6-4	3/4" X 16	1/4" X 18	33	33	19
HY241-6-6	3/4" X 16	3/8" X 18	33	33	19
HY241-6-8	3/4" X 16	1/2" X 14	37	37	22
HY241-8-4	7/8" X 14	1/4" X 18	37	37	22
HY241-8-6	7/8" X 14	3/8" X 18	37	37	22
HY241-8-8	7/8" X 14	1/2" X 14	37	37	22
HY241-10-12	1" 1/16 X 12	3/4" X 14	40	40	27
HY241-12-12	1" 3/16 X 12	3/4" X 14	49	49	33
HY241-12-16	1" 3/16 X 12	1" X 11.5	49	49	33
HY241-14-16	1" 5/16 X 12	1" X 11.5	49	49	33
HY241-16-16	1" 5/8 X 12	1" X 11.5	57	57	44
HY241-16-20	1" 5/8 X 12	1" 1/4 X 11.5	57	57	44
—	—	—	—	—	—



CODO 90° MF CIERRE JIC 37° ROSCA UNF - MF CIERRE ORING ROSCA UNF

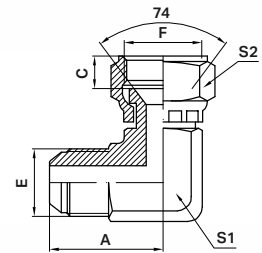
CÓDIGO	ROSCAS		DIMENSIONES (MM)			
	UNF (E)	UNF (F)	A	B	S1	S2
HY248-4-4	9/16" X 18	9/16" X 18	29	31.8	14	19
HY248-6-6	3/4" X 16	3/4" X 16	33	36.8	19	24
HY248-6-8	3/4" X 16	7/8" X 14	37	44	22	27
HY248-8-6	7/8" X 14	3/4" X 16	37	40	22	27
HY248-8-8	7/8" X 14	7/8" X 14	37	44	22	27
HY248-10-10	1" 1/16 X 12	1" 1/16 X 12	40	51	27	32
HY248-10-12	1" 1/16 X 12	1" 3/16 X 12	40	51	27	32
HY248-12-10	1" 3/16 X 12	1" 1/16 X 12	49	54.5	33	41
HY248-12-12	1" 3/16 X 12	1" 3/16 X 12	49	54.5	33	41



ACCESORIOS

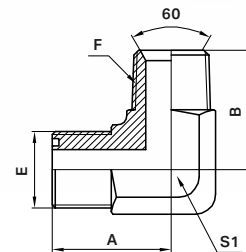
CODO 90° HG CIERRE JIC 37° ROSCA UNF - MF CIERRE JIC 37° ROSCA UNF

CÓDIGO	ROSCAS		DIMENSIONES (MM)			
	UNF (E)	UNF (F)	A	C	S1	S2
HY254-4-4	9/16" X 18	9/16" X 18	29	10	14	19
HY254-6-6	3/4" X 16	3/4" X 16	33	11	19	24
HY254-8-8	7/8" X 14	7/8" X 14	37	11	22	27



CODO 90° MF CIERRE PLANO ROSCA UNF - MF CIERRE CONICO ROSCA NPT

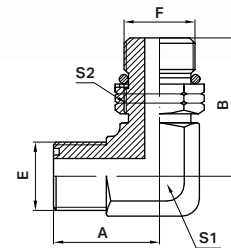
CÓDIGO	ROSCAS		DIMENSIONES (MM)			
	UNF (E)	NPT (F)	A	C	S1	S2
HYP281-4-4	9/16" X 18	1/4" X 18	29	27	14	14
HYP281-5-4	11/16" X 16	1/4" X 18	33	33	19	19
HYP281-5-6	11/16" X 16	3/8" X 18	33	33	19	19
HYP281-5-8	11/16" X 16	1/2" X 14	37	37	22	22
HYP281-7-6	13/16" X 16	3/8" X 18	37	37	22	22
HYP281-7-8	13/16" X 16	1/2" X 14	37	37	22	22
HYP281-9-8	1" X 14	1/2" X 14	40	40	27	27
HYP281-9-12	1" X 14	3/4" X 14	40	40	27	27
HYP281-12-12	1" 3/16 X 12	3/4" X 14	40	40	27	27



ACCESORIOS

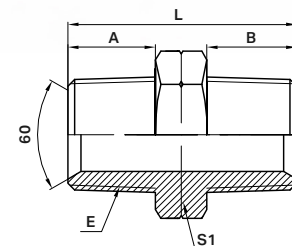
CODO 90° MF CIERRE PLANO ROSCA UNF - MF CIERRE ORING ROSCA UNF

CÓDIGO	ROSCAS		DIMENSIONES (MM)			
	UNF (E)	UNF (F)	A	C	S1	S2
HYP288-4-4	9/16" X 18	9/16" X 18	29	32	14	19
HYP288-5-6	11/16" X 16	3/4" X 16	33	38	19	24
HYP288-7-6	13/16" X 16	3/4" X 16	37	40.5	22	24
HYP288-7-8	13/16" X 16	7/8" X 14	37	45.3	22	27
HYP288-9-10	1" X 14	1" 1/16 X 12	40	52	27	32
HYP288-12-10	1" 3/16 X 12	1" 1/16 X 12	40	54	27	32
—	—	—	—	—	—	—



ADAPTADOR MF CIERRE CONICO ROSCA NPT - MF CIERRE CONICO ROSCA NPT

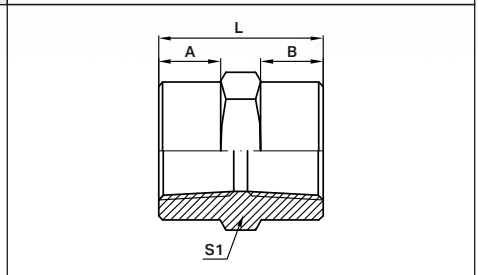
CÓDIGO	ROSCAS		DIMENSIONES (MM)			
	NPT (E)	NPT (F)	A	B	L	S1
HY311-4-4	1/4" X 18	1/4" X 18	14	14	34	14
HY311-6-6	3/8" X 18	3/8" X 18	14	14	34	17
HY311-8-8	1/2" X 14	1/2" X 14	19	19	46	22
HY311-12-12	3/4" X 14	3/4" X 14	19.5	19.5	48	27
HY311-16-16	1" X 11.5	1" X 11.5	24	24	58	36



ACCESORIOS

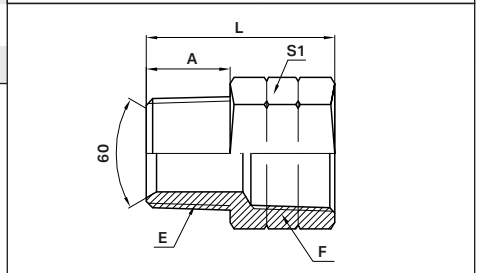
ADAPTADOR HF CIERRE CONICO ROSCA NPT - HF CIERRE CONICO ROSCA NPT

CÓDIGO	ROSCAS		DIMENSIONES (MM)			
	NPT (E)	NPT (F)	A	B	L	S1
HY311-4I-4I	1/4" X 18	1/4" X 18	10	10	28	19
HY311-6I-6I	3/8" X 18	3/8" X 18	11	11	28	19
HY311-8I-8I	1/2" X 14	1/2" X 14	14	14	38	27
HY311-12I-12I	3/4" X 14	3/4" X 14	15.5	15.5	42	36
HY311-16I-16I	1" X 11.5	1" X 11.5	17	17	50	41



ADAPTADOR HF CIERRE CONICO ROSCA NPT - MF CIERRE CONICO ROSCA NPT

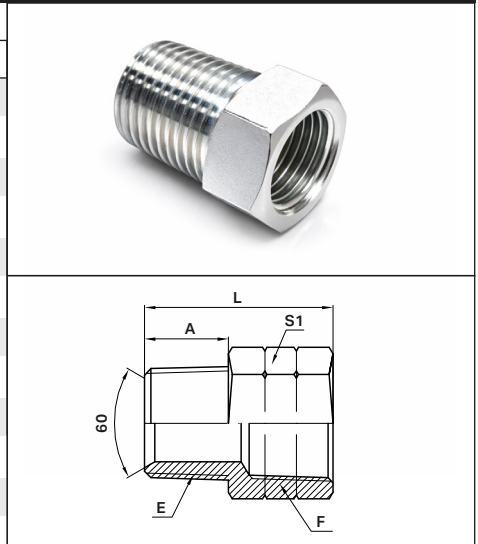
CÓDIGO	ROSCAS		DIMENSIONES (MM)			
	NPT (E)	NPT (F)	A	B	L	S1
HY311-4I-2	1/8" X 27	1/4" X 18	10	14	28	19
HY311-8I-4	1/4" X 18	1/2" X 14	14	19	43	24
HY311-8I-6	3/8" X 18	1/2" X 14	14	19	40	30
HY311-8I-8	1/2" X 14	1/2" X 14	19	19.5	47	32
HY311-12I-8	1/2" X 14	3/4" X 14	19	19.5	49	36
HY311-16I-12	3/4" X 14	1" X 11.5	19.5	24	54	41
—	—	—	—	—	—	—



ACCESORIOS

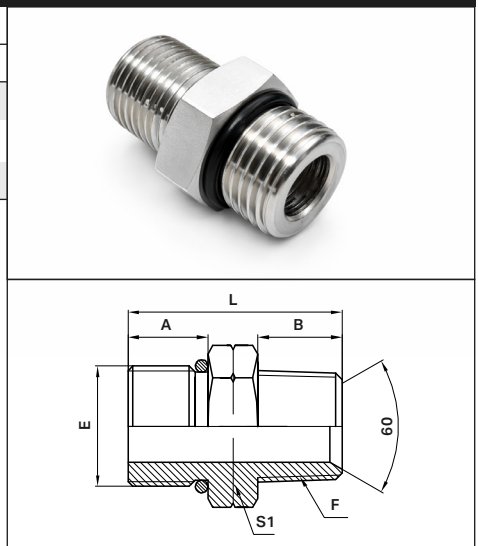
BUJE DE REDUCCION HF CIERRE CONICO ROSCA NPT - MF CIERRE CONICO ROSCA NPT

CÓDIGO	ROSCAS		DIMENSIONES (MM)			
	NPT (E)	NPT (F)	A	M	L	S1
HY811-2I-4	1/4" X 18	1/8" X 27	14	10	20	17
HY811-2I-6	3/8" X 18	1/8" X 27	14	10	21	19
HY811-2I-8	1/2" X 14	1/8" X 27	19	10	27	24
HY811-4I-6	3/8" X 18	1/4" X 18	14	14	21	19
HY811-4I-8	1/2" X 14	1/4" X 18	19	14	27	24
HY811-6I-8	1/2" X 14	3/8" X 18	19	14	27	24
HY811-6I-12	3/4" X 14	3/8" X 18	19.5	14	29	27
HY811-8I-12	3/4" X 14	1/2" X 14	19.5	19	29	30
HY811-8I-16	1" X 11.5	1/2" X 14	24	19	34	36
HY811-12I-16	1" X 11.5	3/4" X 14	24	19.5	34	36
HY811-12I-20	1" 1/4 X 11.5	3/4" X 14	25	19.5	38	46
HY811-16I-20	1" 1/4 X 11.5	1" X 11.5	25	24	38	46
HY811-16I-24	1" 1/2 X 11.5	1" X 11.5	25	24	42	50
HY811-20I-24	1" 1/2 X 11.5	1" 1/4 X 11.5	25	25	42	50
—	—	—	—	—	—	—



ADAPTADOR MF CIERRE CONICO ROSCA NPT - MF CIERRE ORING ROSCA UNF

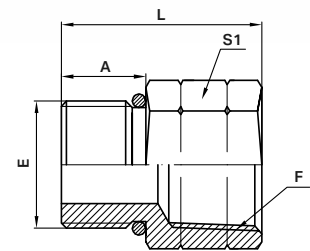
CÓDIGO	ROSCAS		DIMENSIONES (MM)			
	UNF (E)	NPT (F)	A	M	L	S1
HY318-8-6	3/4" X 16	1/2" X 14	12	19	41	27
HY318-8-8	7/8" X 14	1/2" X 14	13.5	19	42.5	30
—	—	—	—	—	—	—



ACCESORIOS

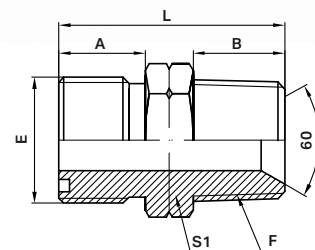
ADAPTADOR HF CIERRE CONICO ROSCA NPT - MF CIERRE ORING ROSCA UNF

CÓDIGO	ROSCAS		DIMENSIONES (MM)			
	UNF (E)	NPT (F)	A	—	L	S1
HY318-8I-6	3/4" X 16	1/2" X 14	12	—	38	30
HY318-8I-8	7/8" X 14	1/2" X 14	13.5	—	39	30
—	—	—	—	—	—	—



ADAPTADOR MF CIERRE PLANO ROSCA UNF - MF CIERRE CONICO ROSCA NPT

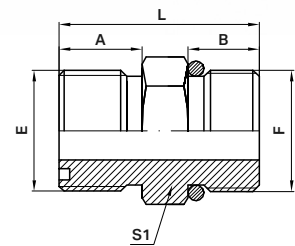
CÓDIGO	ROSCAS		DIMENSIONES (MM)			
	UNF (E)	NPT (F)	A	B	L	S1
HYP381-4-4	9/16" X 18	1/4" X 18	10	14	30	17
HYP381-5-4	11/16" X 16	1/4" X 18	11	14	31	19
HYP381-5-6	11/16" X 16	3/8" X 18	11	14	31	19
HYP381-5-8	11/16" X 16	1/2" X 14	11	19	38	22
HYP381-7-6	13/16" X 16	3/8" X 18	12	14	34	22
HYP381-7-8	13/16" X 16	1/2" X 14	12	19	39	22
HYP381-9-8	1" X 14	1/2" X 14	13.5	19	41	27
HYP381-9-12	1" X 14	3/4" X 14	13.5	19.5	42	27
HYP381-12-12	1" 3/16 X 12	3/4" X 14	13.5	19.5	42	32



ACCESORIOS

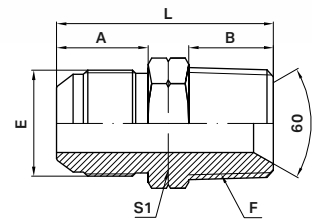
ADAPTADOR MF CIERRE PLANO ROSCA UNF - MF CIERRE ORING ROSCA UNF

CÓDIGO	ROSCAS		DIMENSIONES (MM)			
	UNF (E)	UNF (F)	A	B	L	S1
HYP388-4-4	9/16" X 18	9/16" X 18	12	12	30	17
HYP388-5-6	11/16" X 16	3/4" X 16	14	12	34	22
HYP388-7-6	13/16" X 16	3/4" X 16	15	12	35	22
HYP388-7-8	13/16" X 16	7/8" X 14	15	13.5	38	27
HYP388-9-10	1" X 14	1" 1/16 X 12	16.5	16	42	32
HYP388-12-10	1" 3/16 X 12	1" 1/16 X 12	17	16	42	32
—	—	—	—	—	—	—



ADAPTADOR MF CIERRE JIC 37° ROSCA UNF - MF CIERRE CONICO ROSCA NPT

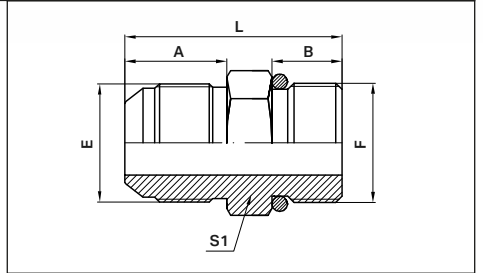
CÓDIGO	ROSCAS		DIMENSIONES (MM)			
	UNF (E)	NPT (F)	A	B	L	S1
HY341-4-4	9/16" X 18	1/4" X 18	14	14	34	17
HY341-4-8	9/16" X 18	1/2" X 14	14	19	41	22
HY341-6-4	3/4" X 16	1/4" X 18	16.7	14	39	22
HY341-6-6	3/4" X 16	3/8" X 18	16.7	14	38	22
HY341-6-8	3/4" X 16	1/2" X 14	16.7	19	44	22
HY341-8-6	7/8" X 14	3/8" X 18	19.5	14	42	24
HY341-8-8	7/8" X 14	1/2" X 14	19.5	19	47	24
HY341-10-12	1" 1/16 X 12	3/4" X 14	22	19.5	50	30
HY341-12-12	1" 3/16 X 12	3/4" X 14	23	19.5	53	36
HY341-14-16	1" 5/16 X 12	1" X 11.5	23	24	58	36
—	—	—	—	—	—	—



ACCESORIOS

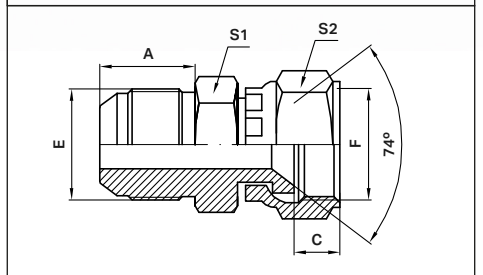
ADAPTADOR MF CIERRE JIC 37° ROSCA UNF - MF CIERRE ORING ROSCA UNF

CÓDIGO	ROSCAS		DIMENSIONES (MM)			
	UNF (E)	UNF (F)	A	B	L	S1
HY348-6-6	3/4" X 16	3/4" X 16	16.7	12	37	24
HY348-6-8	3/4" X 16	7/8" X 14	16.7	13.5	39	27
HY348-8-8	7/8" X 14	7/8" X 14	19.5	13.5	41.5	27
HY348-10-10	1" 1/16 X 12	1" 1/16 X 12	22	16	47	32
HY348-12-12	1" 3/16 X 12	1" 3/16 X 12	23	16	50	36



ADAPTADOR HG CIERRE JIC 37° ROSCA UNF - MF CIERRE JIC 37° ROSCA UNF

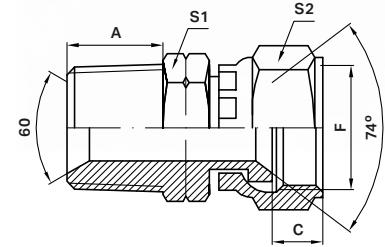
CÓDIGO	ROSCAS		DIMENSIONES (MM)			
	UNF (E)	UNF (F)	A	C	L	S1
HY354-6-6	3/4" X 16	3/4" X 16	16.7	11	44	22
HY354-8-8	7/8" X 14	7/8" X 14	19.5	11	50	22
—	—	—	—	—	—	—



ACCESORIOS

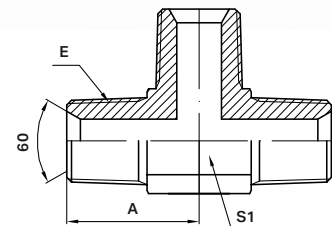
ADAPTADOR HG CIERRE JIC 37° ROSCA UNF - MF CIERRE CONICO ROSCA NPT

CÓDIGO	ROSCAS		DIMENSIONES (MM)			
	NPT (E)	UNF (F)	A	C	L	S1
HY351-6-8	1/2" X 14	3/4" X 16	19	11	47	22
HY351-8-8	1/2" X 14	7/8" X 14	19	11	50	22
—	—	—	—	—	—	—



TEE MF CONICO ROSCA NPT EN TODOS SUS LADOS

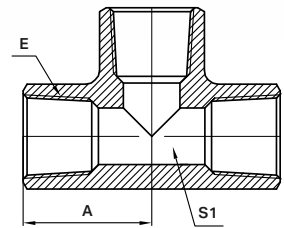
CÓDIGO	ROSCAS			DIMENSIONES (MM)	
	NPT (E)	NPT (E)	NPT (E)	A	S1
HY3111-4-4-4	1/4" X 18	1/4" X 18	1/4" X 18	27	14
HY3111-6-6-6	3/8" X 18	3/8" X 18	3/8" X 18	28	17
HY3111-8-8-8	1/2" X 14	1/2" X 14	1/2" X 14	33	22



ACCESORIOS

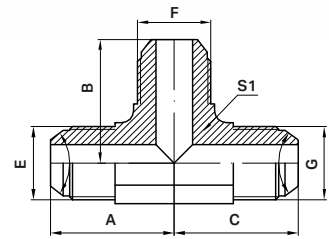
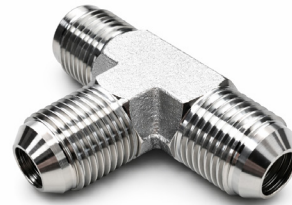
TEE HF CONICO ROSCA NPT EN TODOS SUS LADOS

CÓDIGO	ROSCAS			DIMENSIONES (MM)	
	NPT (E)	NPT (E)	NPT (E)	A	S1
HY3111-4I-4I-4I	1/4" X 18	1/4" X 18	1/4" X 18	21	17
HY3111-6I-6I-6I	3/8" X 18	3/8" X 18	3/8" X 18	24	22
HY3111-8I-8I-8I	1/2" X 14	1/2" X 14	1/2" X 14	27	26



TEE MF CIERRE JIC 37° ROSCA UNF EN TODOS SUS LADOS

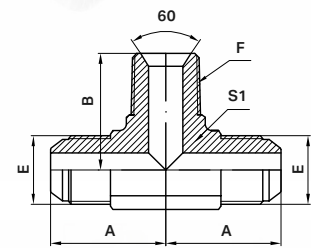
CÓDIGO	ROSCAS			DIMENSIONES (MM)			
	UNF (E)	UNF (F)	UNF (G)	A	B	C	S1
HY3444-4-4-4	9/16" X 18	9/16" X 18	9/16" X 18	27	27	27	14
HY3444-6-6-6	3/4" X 16	3/4" X 16	3/4" X 16	30	30	30	19
HY3444-8-8-8	7/8" X 14	7/8" X 14	7/8" X 14	33	33	33	22



ACCESORIOS

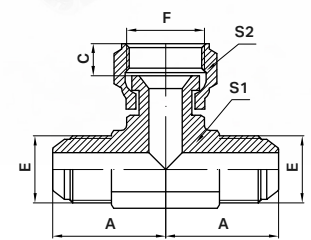
TEE MF CIERRE JIC 37° ROSCA UNF - MF CIERRE CONICO ROSCA NPT

CÓDIGO	ROSCAS		DIMENSIONES (MM)			
	UNF (E)	NPT (F)	A	B	—	S1
HY3441-6-6-8	3/4" X 16	1/2" X 14	33	33	—	22



TEE MF CIERRE JIC 37° ROSCA UNF - HG CIERRE JIC 37° ROSCA UNF

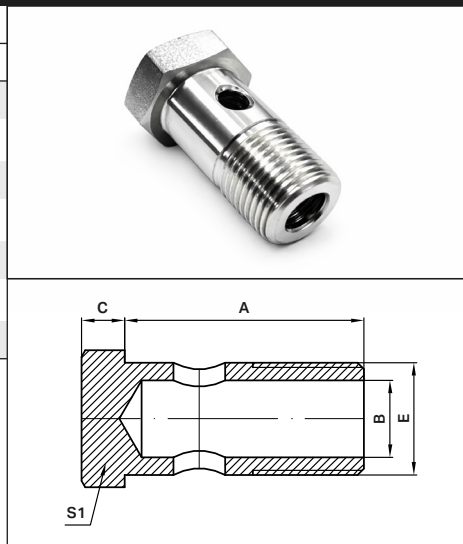
CÓDIGO	ROSCAS		DIMENSIONES (MM)			
	UNF (E)	UNF (F)	A	B	—	S1
HY3445-6-6-6	3/4" X 16	3/4" X 16	30	11	—	19



ACCESORIOS

BULON PERFORADO MF CIERRE ARANDELA ROSCA METRICA

CÓDIGO	ROSCAS	DIMENSIONES (MM)			
	METRICA (E)	A	B	C	S1
HY500-M10	M10 X 1	19	5	6	14
HY500-M12	M12 X 1.5	24	6	6	17
HY500-M14	M14 X 1.5	26	8	7	19
HY500-M16	M16 X 1.5	28	9	7.5	22
HY500-M18	M18 X 1.5	32	11	8	24
HY500-M20	M20 X 1.5	36	12	8	25
HY500-M22	M22 X 1.5	39	14	9	27



HY POWER

@ hypower.ar ventas@hypower.ar

+54 9 3492 58-1305 +54 9 3492 57-5408

Laprida 61, Rafaela, Sante Fe

➔ Para más información visitá nuestra web www.hypower.ar